



ADOT&PF Project No. IM-04-1(23)/57178

Meeting Notes

SUBJECT: Parks Highway, MP 44-52
PROJECT NO.: IM-04-1(23)/57178
GROUP: Miscellaneous Agencies/Groups
DATE: May 16, 2007
TIME: 10:00 AM
LOCATION: Wasilla Sports Complex
Wasilla, Alaska
MEETING OUTREACH: U-Turn Mockup Drive-Through
MEETING ATTENDANCE: Agencies/Groups
- ADOT&PF Maintenance (Kurt Devon: 269-0782)
- Matsu Emergency Services (Clint Vardman: 373-8804)
- Big Lake Fire Department
- Meadow Lakes Fire Department
- Wasilla Fire Department
- Matsu School District (Chris Remik: 373-2287)
- Alaska Truckers Association (Aves Thompson: 276-1149)
- Alaskan Trails RV & Camper Park
MEETING MATERIALS: 1) *Handouts:* U-Turn/Loon Layout Plan
2) *Mockup:* Full Size drive through layout of U-Turn/Loon
STAFF PRESENT: *ADOT&PF:* Paul Wescott
HDL: Dennis Linnell; Jeff Fuglestad
Kinney Engineering: Randy Kinney; Chad Harings
MEETING INFORMATION:

In response to public and agency concerns about the feasibility of vehicle movements through the U-turn/loons proposed for this project, a full sized mockup of a typical U-turn/loon was laid out at the Wasilla Sports Complex parking lot, and miscellaneous agencies were invited to bring vehicles for drive through testing of the mockup.

HDL & Kinney Engineering personnel recorded the vehicle tests with digital video and photos.

The following is a list of vehicles that were tested:

- Plow Truck and Sander - ADOT&PF Maintenance
- Tanker Truck #33 – Big Lake Fire Dept.
- Tanker Truck #24 – Meadow Lakes Fire Dept.
- Ladder Truck #61 – Wasilla Fire Dept.
- Tanker Truck #22 – Meadow Lakes Fire Dept.

- Tanker Truck #711 – Meadow Lakes Fire Dept.
- Interstate Semitrailer (WB-67) – Alaska Truckers Assoc.
- Interstate Double Combination (WB-109) *Simulated* - Alaska Truckers Assoc.
- Motor Home (MH) – Alaskan Trails RV & Camper Park
- Motor Home and 20' Trailer - Alaskan Trails RV & Camper Park
- School (S-BUS-40) - Matsu School District
- Pickup and 20' Trailer - HDL

Each vehicle was driven through the mockup numerous times in order to test the movement through the U-turn/loon.

All of the listed vehicles successfully navigated the mockup, except for Ladder Truck #61. This vehicle has a poor turning radius and HDL was informed that this vehicle is slated to be retired from service in the near future. The mockup was then modified slightly by adding a 12' tangent extension to the outer portion of the loon and tested again with this vehicle. The vehicle was then able to successfully navigate the modified U-turn/loon mockup.

The Interstate Semitrailer (WB-67) is the design vehicle used to size the U-turn/loon. This vehicle successfully navigated the movement through the mockup. A simulated drive through of a double trailer version (WB-109) of this vehicle was tested. This simulated vehicle also successfully navigated the U-turn/loon. The driver of this vehicle suggested that an addition few feet of the inside portion of the U-turn design include a hardened surface to support the left rear wheel track of the double combination vehicle.



Plow Truck and Sander – ADOT&PF Maintenance



Tanker Truck #33 – Big Lake Fire Dept



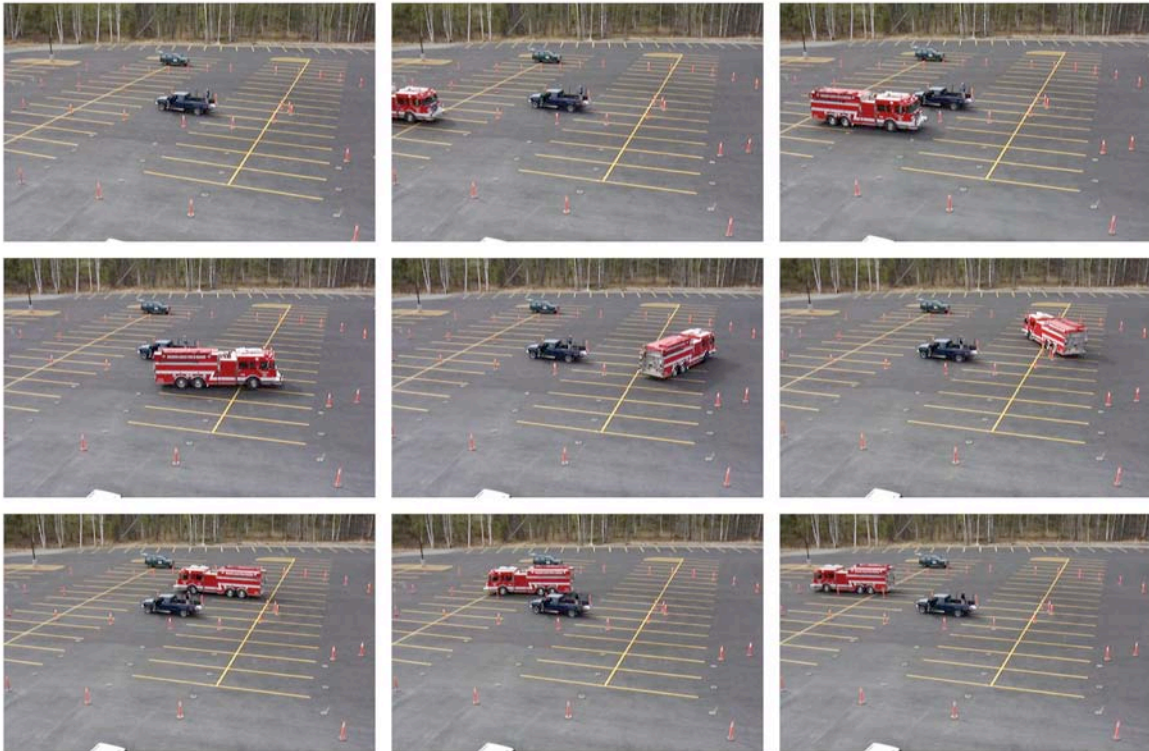
Tanker Truck #24 – Meadow Lakes Fire Dept.



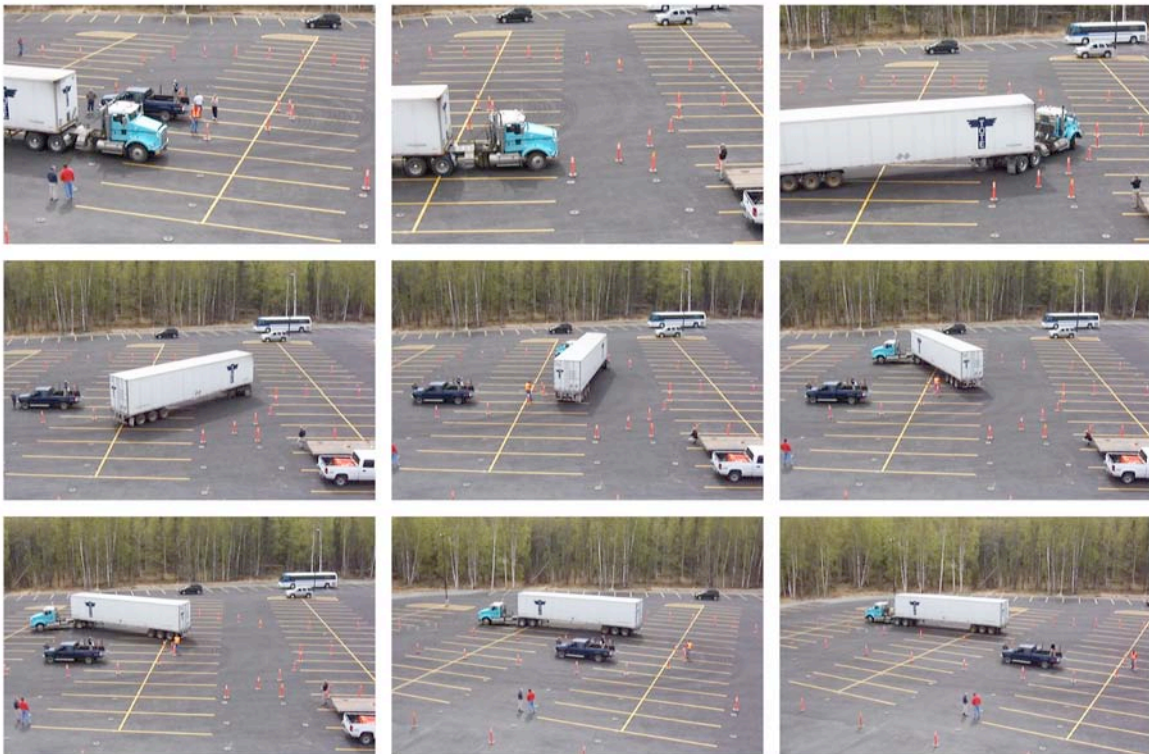
Ladder Truck #61 – Wasilla Fire Dept.



Tanker Truck #22 – Meadow Lakes Fire Dept.



Tanker Truck #711 – Meadow Lakes Fire Dept.



Interstate Semitrailer (WB-67) – Alaska Trucking Association



Motorhome (MH) - Alaskan Trails RV & Camper Park



School (S-BUS-40)