

Five (5) Lane Versus Four (4) Lane Divided

Safety measured by conflict points

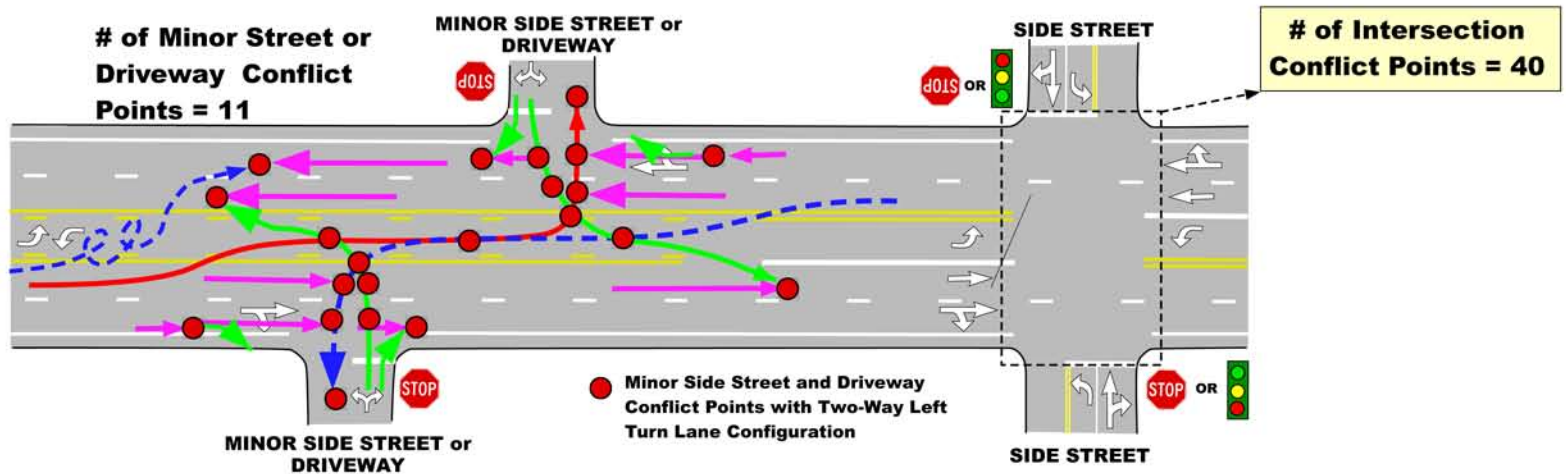
What is a conflict point?

A conflict point is the point at which a highway user crossing, merging with, or diverging from a road or driveway conflicts with another highway user using the same road or driveway. It is any point where the paths of two through or turning vehicles diverge, merge, or cross (see figure below).

Why are conflict points important?

Conflict points are associated with increased levels of roadway crashes. A motorist can safely negotiate only so many conflict points within a given area. Studies have shown that when driveway access to arterial roadways is granted to too many property owners without considering future traffic volumes and roadway classifications, the extra driveways increase the rate of accidents and decrease the efficiency of the roadway.

5 Lane Configuration (2 through lanes with center two-way left turn lane)



4 Lane Divided Highway

(2 through lanes, center non-traversable median, median openings on 1/2 mile spacing)

